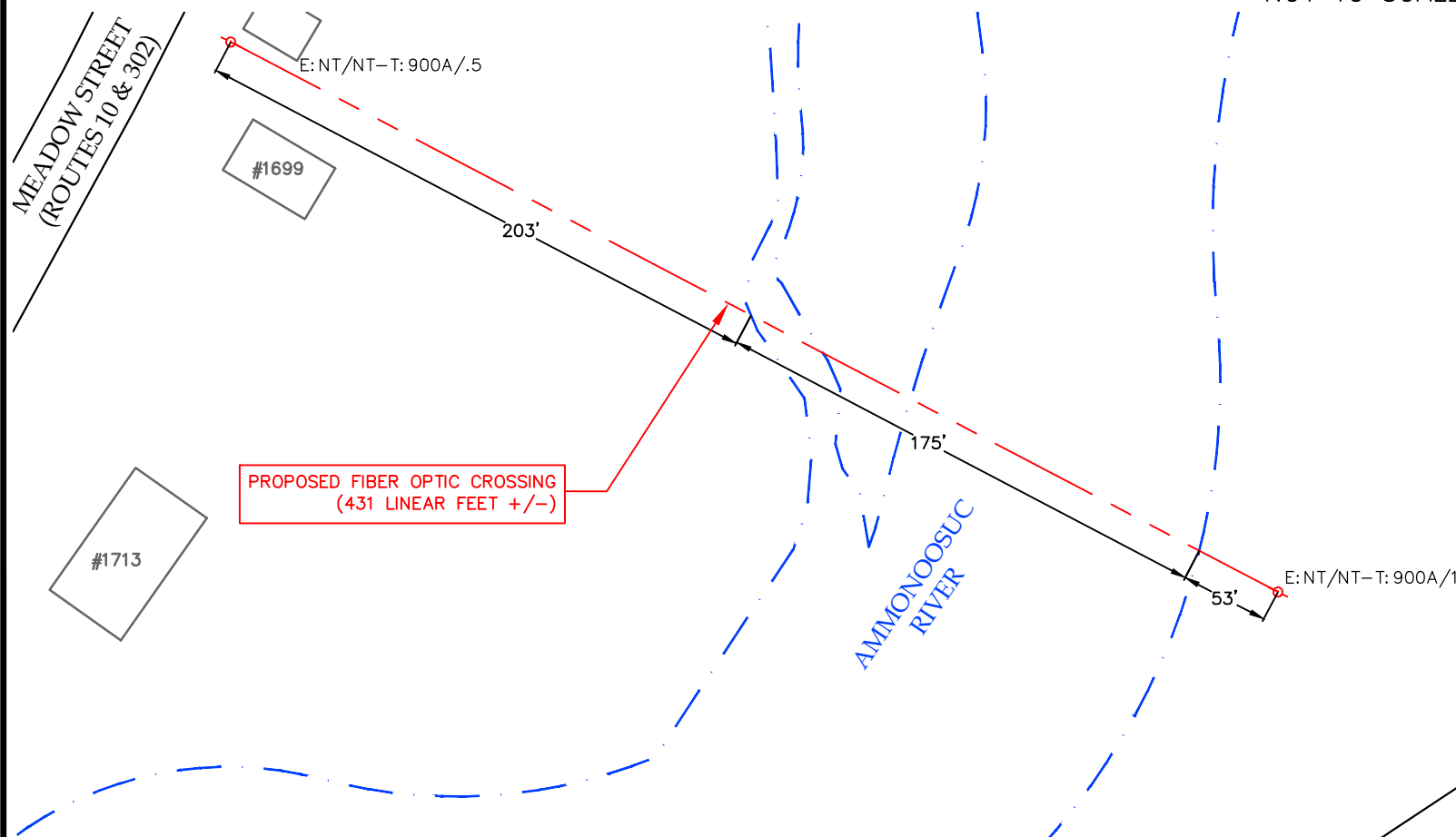




FIBER OPTIC CROSSING - PLAN VIEW WITH AERIAL IMAGE

NOT TO SCALE



FIBER OPTIC CROSSING - PLAN VIEW

GENERAL NOTES

1. UTILITY HEIGHTS AND RIVER WIDTHS SHOWN ON THIS PLAN ARE BASED ON A FIELD INSTRUMENT SURVEY PERFORMED BY JOYCE CONSULTING GROUP ON AUGUST 26, 2015.
2. VERTICAL DATUM OF NGVD 1929 BASED ON NHDOT SURVEY DISK 265 0050 WITH AN ELEVATION OF 700.35 (NGVD29).
3. THE CONTRACTOR SHALL PROTECT AND MAINTAIN ALL EXISTING UTILITY SERVICES THROUGHOUT CONSTRUCTION. CONTACT DIG SAFE AT 1-888-DIGSAFE AT LEAST 72 HOURS PRIOR TO CONSTRUCTION. CONTRACTOR SHALL VERIFY LOCATION OF EXISTING UTILITIES PRIOR TO CONSTRUCTION.
4. THE WATERWAY IS CLASSIFIED AS NOT SUITABLE FOR SAITBOATING AND PER NESC TABLE 232-1 A VERTICAL CLEARANCE OF 14' MUST BE MAINTAINED BETWEEN THE LOWEST CONDUCTOR AND THE 10 YEAR FLOODPLAIN. AN EXISTING CLEARANCE OF 14.6 FEET IS PROVIDED.



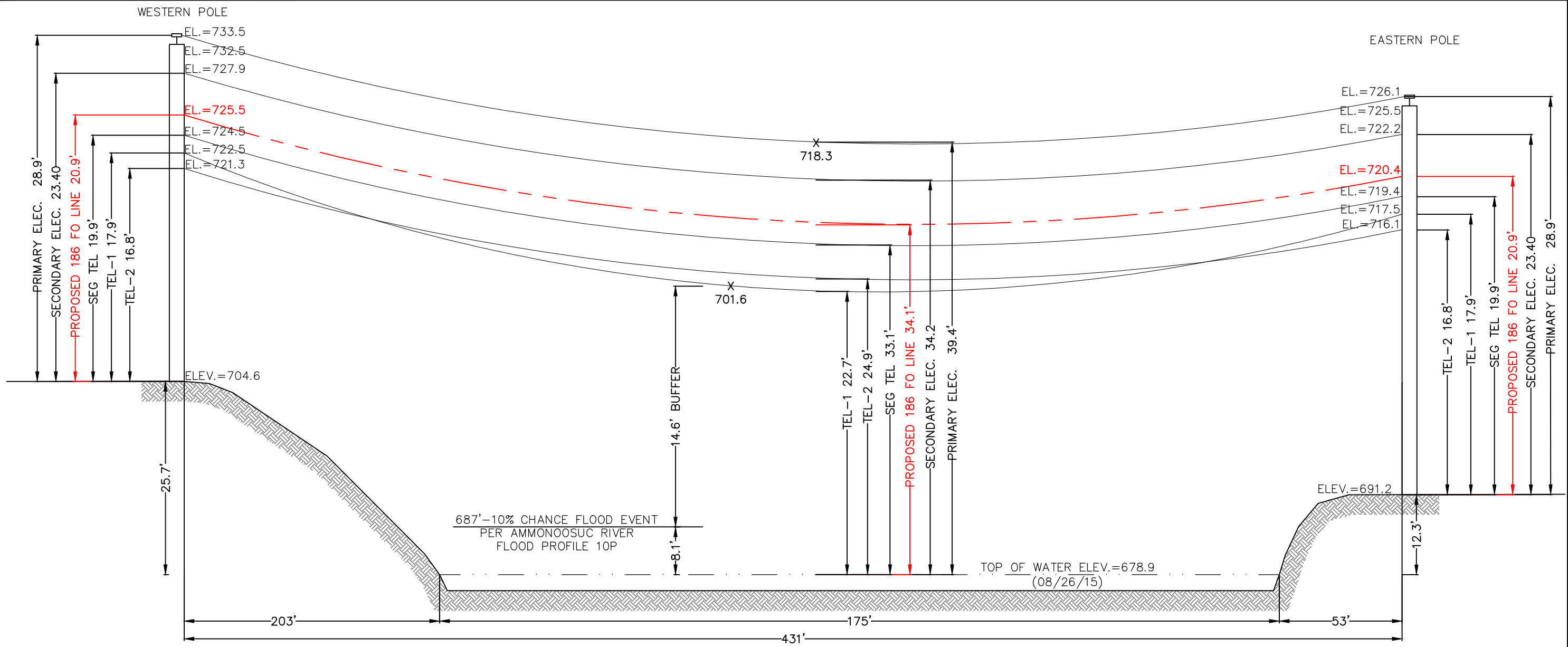
JOYCE CONSULTING GROUP, INC.
 100 WYMAN ROAD
 BRAINTREE, MA 02184
 781-817-6120
 hello@joycecg.com

"Copyright 2015" Joyce Consulting Group, Inc. All rights reserved
 unauthorized duplication is a violation of all applicable laws.

PLAN TITLE:
**PROPOSED FIBER OPTIC CROSSING - SHEET 1 OF 2
 AMMONOOSUC RIVER AT 1699 MEADOW STREET
 LITTLETON, NH**

PREPARED FOR:
**186 COMMUNICATION
 10 N SOUTHWOOD DRIVE
 NASHUA, NH 03063**

DATE 08-31-15 | REV- | SCALE N.T.S. | JOB NO. 15-040



FIBER OPTIC PROFILE PLAN
NOT TO SCALE

GENERAL NOTES

1. UTILITY HEIGHTS RIVER WIDTH/LOCATIONS SHOWN ON THIS PLAN ARE BASED ON A FIELD INSTRUMENT SURVEY PERFORMED BY JOYCE CONSULTING GROUP ON AUGUST 26, 2015.
2. VERTICAL DATUM OF NGVD 1929 BASED ON NHDOT SURVEY DISK 265 0050 WITH AN ELEVATION OF 700.35 (NGVD29).
3. THE CONTRACTOR SHALL PROTECT AND MAINTAIN ALL EXISTING UTILITY SERVICES THROUGHOUT CONSTRUCTION. CONTACT DIG SAFE AT 1-888-DIGSAFE AT LEAST 72 HOURS PRIOR TO CONSTRUCTION. CONTRACTOR SHALL VERIFY LOCATION OF EXISTING UTILITIES PRIOR TO CONSTRUCTION.
4. THE WATERWAY IS CLASSIFIED AS NOT SUITABLE FOR SAILBOATING AND PER NESC TABLE 232-1 A VERTICAL CLEARANCE OF 14' MUST BE MAINTAINED BETWEEN THE LOWEST CONDUCTOR AND THE 10 YEAR FLOODPLAIN. AN EXISTING CLEARANCE OF 14.6 FEET IS PROVIDED.




JOYCE CONSULTING GROUP, INC.
100 WYMAN ROAD
BRAintree, MA 02184
781-817-6120
hello@joycecg.com

"Copyright 2015" Joyce Consulting Group, Inc. All rights reserved
unauthorized duplication is a violation of all applicable laws.

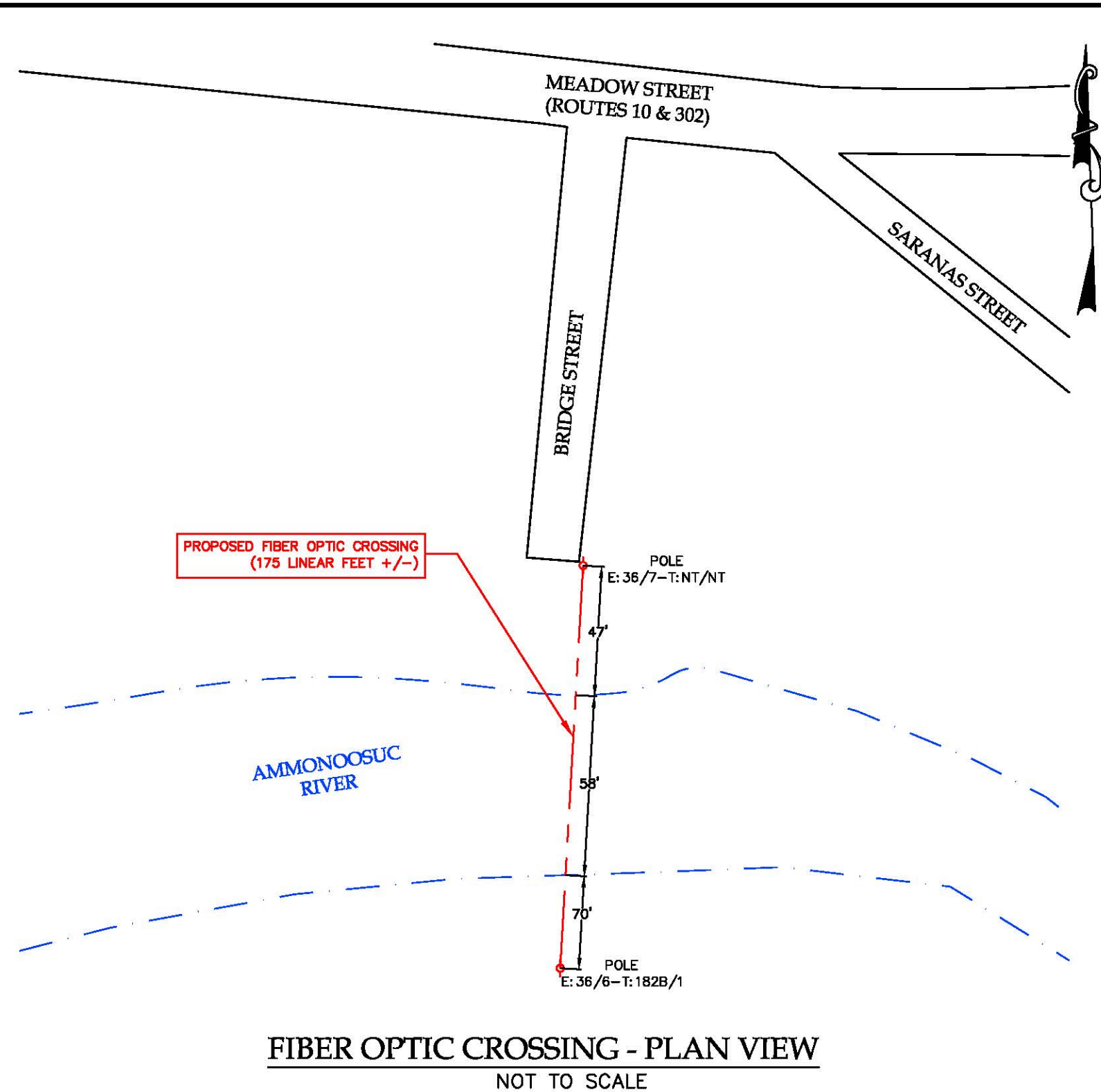
PLAN TITLE: PROPOSED FIBER OPTIC CROSSING - SHEET 2 OF 2 AMMONOOSUC RIVER AT 1699 MEADOW STREET LITTLETON, NH			
PREPARED FOR: 186 COMMUNICATION 10 N SOUTHWOOD DRIVE NASHUA, NH 03063			
DATE 08-31-15	REV-	SCALE N.T.S.	JOB NO. 15-040



FIBER OPTIC CROSSING - PLAN VIEW WITH AERIAL IMAGE
NOT TO SCALE

GENERAL NOTES

1. UTILITY HEIGHTS AND RIVER WIDTHS SHOWN ON THIS PLAN ARE BASED ON A FIELD INSTRUMENT SURVEY PERFORMED BY JOYCE CONSULTING GROUP ON AUGUST 26, 2015.
2. VERTICAL DATUM OF NGVD 1929 BASED ON NHDOT SURVEY DISK 265 0330 WITH AN ELEVATION OF 819.00 (NGVD29).
3. THE WATERWAY IS CLASSIFIED AS NOT SUITABLE FOR SAILBOATING AND PER NESC TABLE 232-1 A VERTICAL CLEARANCE OF 14' MUST BE MAINTAINED BETWEEN THE LOWEST CONDUCTOR AND THE 10 YEAR FLOODPLAIN. AN EXISTING CLEARANCE OF 14.6 FEET IS PROVIDED.



FIBER OPTIC CROSSING - PLAN VIEW
NOT TO SCALE



JOYCE CONSULTING GROUP, INC.
100 WYMAN ROAD
BRAintree, MA 02184

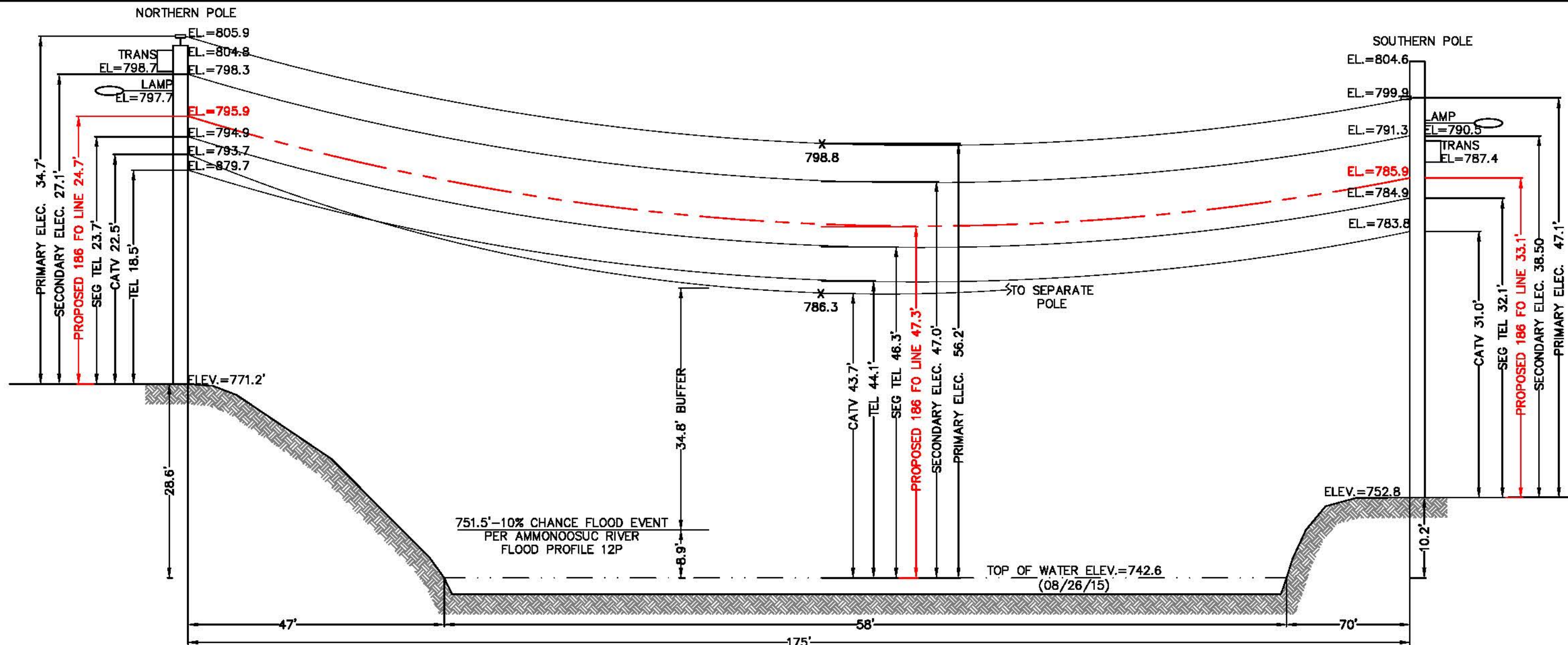
781-817-6120
hello@joycecg.com

"Copyright 2015" Joyce Consulting Group, Inc. All rights reserved
unauthorized duplication is a violation of all applicable laws.

PLAN TITLE:
PROPOSED FIBER OPTIC CROSSING - SHEET 1 OF 2
AMMONOOSUC RIVER AT BRIDGE STREET
LITTLETON, NH

PREPARED FOR:
186 COMMUNICATION
10 N SOUTHWOOD DRIVE
NASHUA, NH 03063

DATE 08-31-15 | REV- | SCALE N.T.S. | JOB NO. 15-040



FIBER OPTIC PROFILE PLAN

NOT TO SCALE

GENERAL NOTES

1. UTILITY HEIGHTS AND RIVER WIDTHS SHOWN ON THIS PLAN ARE BASED ON A FIELD INSTRUMENT SURVEY PERFORMED BY JOYCE CONSULTING GROUP ON AUGUST 26, 2015.
2. VERTICAL DATUM OF NGVD 1929 BASED ON NHDOT SURVEY DISK 265 0330 WITH AN ELEVATION OF 819.00 (NGVD29).
3. THE CONTRACTOR SHALL PROTECT AND MAINTAIN ALL EXISTING UTILITY SERVICES THROUGHOUT CONSTRUCTION. CONTACT DIG SAFE AT 1-888-DIGSAFE AT LEAST 72 HOURS PRIOR TO CONSTRUCTION. CONTRACTOR SHALL VERIFY LOCATION OF EXISTING UTILITIES PRIOR TO CONSTRUCTION.
4. THE WATERWAY IS CLASSIFIED AS NOT SUITABLE FOR SAILBOATING AND PER NESC TABLE 232-1 A VERTICAL CLEARANCE OF 14' MUST BE MAINTAINED BETWEEN THE LOWEST CONDUCTOR AND THE 10 YEAR FLOODPLAIN. AN EXISTING CLEARANCE OF 34.8 FEET IS PROVIDED.



JOYCE CONSULTING GROUP, INC.
 100 WYMAN ROAD
 BRAINTREE, MA 02184

781-817-6120
 hello@joycecg.com

"Copyright 2015" Joyce Consulting Group, Inc. All rights reserved
 unauthorized duplication is a violation of all applicable laws.

PLAN TITLE:
PROPOSED FIBER OPTIC CROSSING - SHEET 2 OF 2
AMMONOOSUC RIVER AT BRIDGE STREET
LITTLETON, NH

PREPARED FOR:
186 COMMUNICATION
10 N SOUTHWOOD DRIVE
NASHUA, NH 03063

DATE 08-31-15 REV- SCALE N.T.S. JOB NO. 15-040